

PRESTIGE

— THE MAN STORE —


★ AR ZSPZF BLXP CEY
KCPZQ CFE MR ~~THO~~ ~~TX~~
PO CM IUHO NS PG BW PA
BL UT BLVB XR FA RA TN
SI MS RS POLY TR KP QEM
~~RE~~ ~~X~~ BTRU OWB ZE RY O
BS OI NF RU OURM ES N
YB MM AO ZA RSZ NA NIZ
MF HK WORLD IS TN OR
XY BO ZN CA EH QE GN F
~~ST~~ ~~ALO~~ RE DZ UETE S
IH MYXQRP RE ZG OR

SCULPT YOUR WORLD

Plasticity, not plastics.
Fabric flow.

Colour loud and clear.
Layer: long over short over long

Silhouettes: full up.
This is your content generator.

A woman with long dark hair, wearing a long, flowing, light-colored (possibly white or cream) dress, stands in a misty, outdoor setting. She is positioned next to a metal fence with a diamond-patterned mesh. The background is a soft, hazy landscape with greenery and a distant horizon. The overall mood is ethereal and artistic.

If we wish to make a new world
we have the material ready.

The first one, too,
was made out of chaos.

— Robert Quillen

Silhouette news: big is boss.

The mega-kurta with leg-of-mutton sleeves, elasticized cuffs. Coordinated salwars.





Frock 'n' roll.

*Tunic with mock turtleneck and side zip closure.
Side-draped-and-buckled apron skirt*





Carpe noctum: seize the night in see-through and a satin finish.

*Chiffon shirt with screen-printed motifs;
jacquard dress trousers.*

Sounds of a trumpet
would blow,
I've been the puppet
I've been the strings

"I've Been Delivered"
—The Wallflowers

Cocktail pajamas.



Red-carpet-ready. Take a bow.

*Double-breasted jacquard suit with
peaked lapels; dress shirt,
sash bow tie.*



Plans for the day

explore forest
4:30 - 6:30

Tweak WORLDVIEW
7:00 - 9:00

FLOAT IN A LAKE
3:00 - 5:00

stare at a tree
(as long as possible)

SMELL the flowers
12:00 - 1:00

be a dream
9:00 - 11:00



Crossover:

Bomber jacket, straight-leg slacks, sandals, socks, mini-man bag

Home Sweet Zone





Cropped ikat - weave kimono, floral print shorts



Pool x lounge x sleepover: Sashed kimono-boxer suit



Zoom out





Ethnic luxe. Take a spin.
Festive kurta-sakwar.



Shaadi shock.

*Sherwani with lattice-weave embroidery,
coordinated salwars, kurta, hi-top trainers.*





Long-form, Out there. In here. At The Man Store.

Two-piece suit with knee-length, single-breasted, notched-lapel coat with flapped pockets; turtleneck.





Runaway hit. Neo-avatar kurta-pajama shorts.

Elbow-length kurta with gold motif, coordinated shorts. Hexagonal man bag.



Now showing:
the strawberry nerd.

*String bow tie.
Dress shirt, trousers.*



Look back. Knight in white satin gaberdine.

*Suit with single-breasted, notched-lapel,
two-button patch-pocket jacket,
banded-collar dress shirt.*

Vibe check.

*Checked two-button,
notched-lapel, flap-pocket
jacket, cropped trousers.
Pinstriped casual
cotton shirt, monkstraps.*





Techno / tuexedo

*Contrast-stripe tuxedo trousers, denim jacket,
T-shirt, sandals as before*

breathe,
absorb, believe,
manifest, imagine,
reflect, RESTORE,
feel, hear, heal,
experience,
create, trust,
practice and
everything will
come together

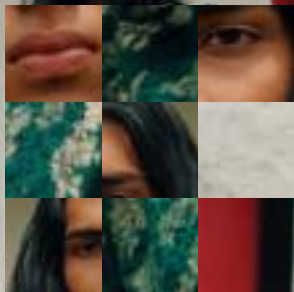
Got to be good lookin',
'cause he's so hard to see.
"Come Together" — The Beatles

*Floral-print North African
inspired gandaura.*





Couch potato channeling inner grunge glam.
Velvet tank, trousers, hi-rise socks



Floral fixation.

Floral woven-motif, shawl-collared shacket, straight-leg, flat-front trousers, tread-sole platform sneakers.



Lean, green style machine.
And the new OTT lapel.

*Checks assorted: single-breasted sports jacket,
dress shirt, flat-front trousers, ascot, lapel ornaments.*



Aquamarine: from sea to shining season.

*Pick of the cropped: cropped
double-breasted waistcoat, pleated ankle-length trousers*



Suitable ploy: keep it short.

*Single-breasted, notched-lapel,
two-button suit,
spread-collar,
barrel-cuffed dress shirt, tie, dress
boots, wristlet man bag.*





Today I'm feeling topical,
Blues just got me thinking and
that green just make me tropical.
"Nervous Pablo" — Adobo

*Floral athleisure windcheater
and cuffed-ankle jogger suit,
strappy sandals, white socks,
beach tote.*



Farmers'-market print.
Tank-top-and-shorts set, belt.

TGIF: Formal x smart cazh.

*Floral-print, shawl-lapel
jacket, spread-collar dress
shirt, dress shorts*





Sing the bundi electric.

—In paraphrase, Walt Whitman

*Shawl-lapped, single-breasted
waistcoat, kurta, churidars,
medallion lapel accessories.*



Do you see what i see ?



The cherry blossom.
Emblem of an exciting, exacting
approach to ready-to-wear.

Hada.

“Skin” in Japanese.
Our new label.
Your second skin.





SCULPT YOUR WORLD

Suit and shirt fabric: Ermenegildo Zegna, Scabal, Loro Piana, Dormeuil, Reda, Vitale Barberis Canonico (VBC), Ariston, Caccioppoli, Cavani, Solbiati, Borelli, Lanificio Cucinello, Sictess, Liberty Prints, Stefano Donati, Thomas Mason, Riba, Donatella Italia

#165, Commercial Street, Bangalore. Ph : 080 25588599, 25588600.

F: @prestigethemanstore
X: @pthemanstore
P: @prestige3668/fashions
I: @prestigethemanstore

www.prestigethemanstore.com



P R E S T I G E
— THE MAN STORE —